



## THE NEED FOR HUMANE AND EFFECTIVE RESEARCH

Animal Aid, like the general public, wants to see research that is both humane and likely to lead to genuine medical progress. There are many effective and sophisticated methods available that do not use animals, and so produce results that are directly relevant to people. These include microdosing, computer modelling, imaging technologies and traditional methods such as clinical observation, autopsy studies and epidemiology.

In addition to traditional GM mice 'production' methods, a relatively new gene-editing technique – CRISPR – heralds the use of yet more mice. Described as 'so cheap and easy that thousands of labs are already using it for research', there can be terrible results for animals if the 'editing' does not happen in the correct place. Please see the Animal Aid website for more information on this technique and what it means for animals.

View Animal Aid's short film about GM mouse experiments and read our scientific report at [www.animalaid.org.uk/GMmice](http://www.animalaid.org.uk/GMmice)

## MICE ARE NOT PEOPLE

**Mice share around 80 per cent of genes with human beings but the way those genes function and are regulated varies greatly between the two species – which is why humans and rodents look and behave so differently.**

Adding or subtracting a gene or two (the main alterations done to GM mice) does not overcome the fundamental biological disparities between humans and rodents. This is why researchers are unable to reproduce diseases in GM mice that are sufficiently similar to those experienced by people; and also why drugs and other treatments tried out on mice often fail to work in the same way in human patients.

### I want to support the campaign against GM animal experiments:

- Please send me a FREE End Animal Experiments pack
- I enclose a cheque or postal order for £ \_\_\_\_\_ payable to Animal Aid to help support this campaign.

Name: .....

Address: .....

.....

Phone number (optional) .....

Email address, for campaign updates (optional) .....

Please return completed form to:  
**Animal Aid, The Old Chapel, Bradford Street, Tonbridge, Kent TN9 1AW Tel: 01732 364546**  
Email: [info@animalaid.org.uk](mailto:info@animalaid.org.uk) | [www.animalaid.org.uk](http://www.animalaid.org.uk)

Incorporated under the name Animal Abuse Injustice and Defence Society, a company limited by guarantee. Registered in the UK no. 1787309. Registered office as above. VAT no. 395 2761 19.



# The NIGHTMARE WORLD of GM mice

**A genetically altered mouse has electrodes implanted in her brain by British researchers so that her brainwaves can be monitored. Next, she has acid injected into her stomach. This triggers a series of severe and uninterrupted seizures, which eventually kill her.**

This little mouse might have been small but her ability to feel pain and fear was as great as that of a dog, or a horse... or a human being.



Disease research using GM mice is causing **TERRIBLE ANIMAL SUFFERING**. A major scientific report by Animal Aid argues it is also failing to produce cures for people.



[www.animalaid.org.uk](http://www.animalaid.org.uk)



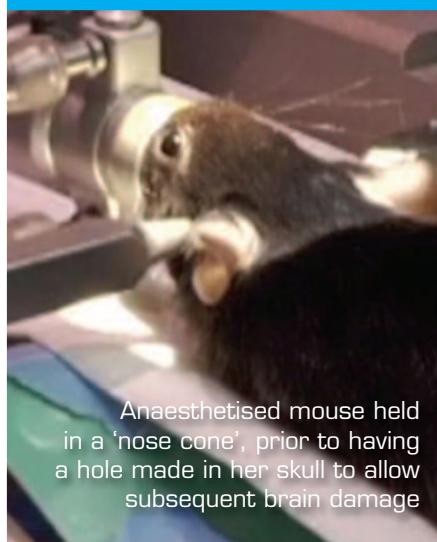
## CRUEL AND INEFFECTIVE



... subjected to 'behavioural despair' test. He will struggle for several minutes to escape from drowning and then give up.

The research programme to tackle the major human diseases by breeding and experimenting on genetically modified mice, according to figures for 2015, involves them in more than two million 'procedures' a year.

Mice are being genetically programmed to develop a range of debilitating illnesses. GM mice have also been brain damaged, forced to inhale tobacco smoke, or injected with acid to induce seizures. Yet Animal Aid's scientific report, ***Science Corrupted: the nightmare world of GM mice*** presents powerful evidence that experimenting on GM rodents does nothing to advance medical progress.



Anaesthetised mouse held in a 'nose cone', prior to having a hole made in her skull to allow subsequent brain damage



"... for every GM mouse used in an experiment, hundreds of others die or are killed."

## PRECIOUS RESOURCES WASTED

Drawing on mouse researchers' own papers published in scientific journals, Animal Aid's scientific report lists numerous 'promising' therapies that worked effectively in GM mice but went on to fail in human patients with conditions such as Alzheimer's, cancer and heart disease.

This waste of scientific resources amounts to a betrayal of human patients desperate for medical progress and the animal suffering caused is a national disgrace.

For every GM mouse used in an experiment, hundreds of others die or

are killed. Increased breeding and use of GM animals has meant the total number of experiments conducted continues to rise.

Those involved in breeding and experimenting on GM mice claim that their research is morally and medically justified.

**Animal Aid's report, 'Science Corrupted' tells the real, appalling and macabre story.**

You can view the short film containing shocking footage of some of the experiments described in the report at: [www.animalaid.org.uk/GMmice](http://www.animalaid.org.uk/GMmice)