

Camel adaptations for the desert environment

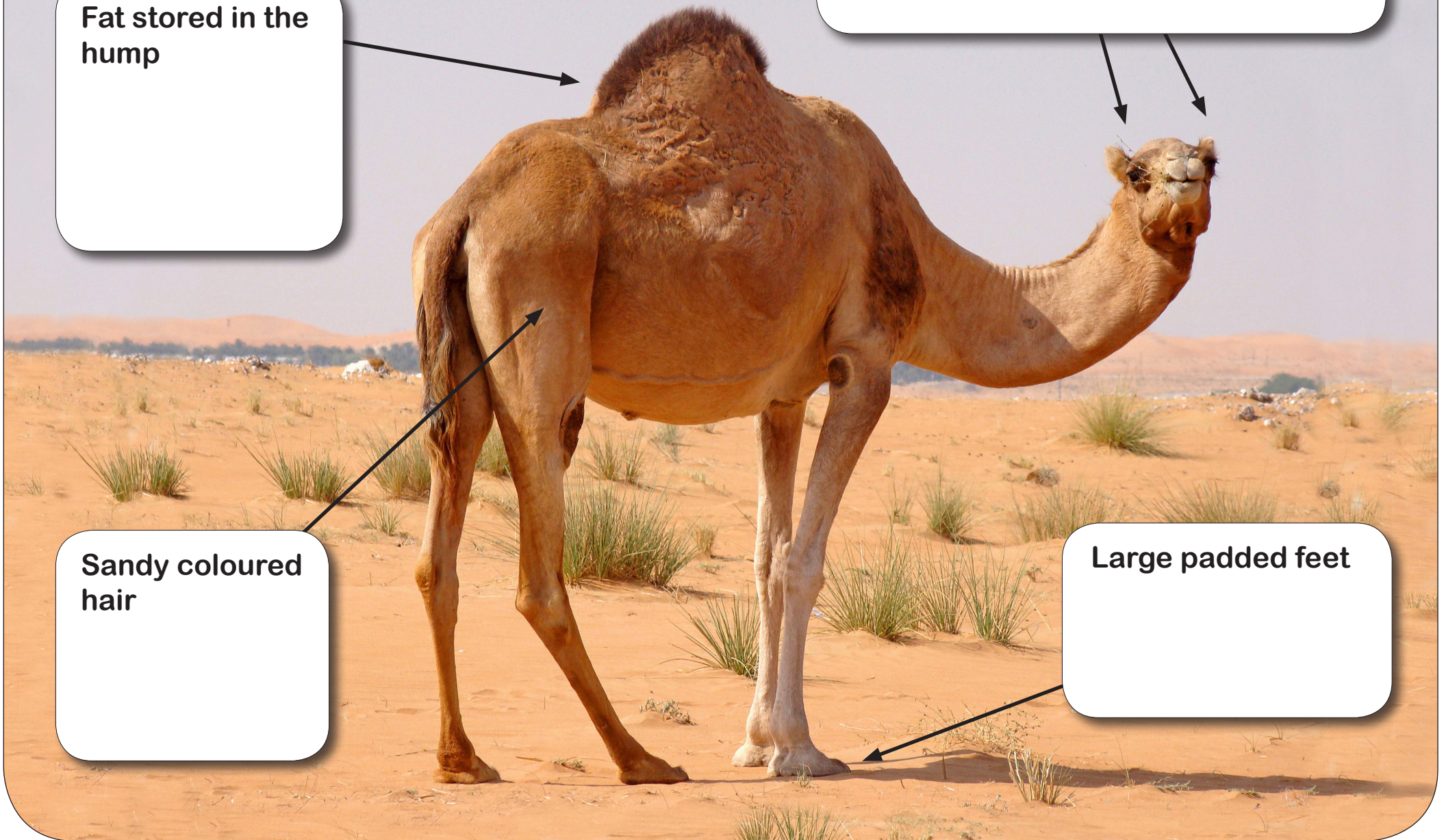
worksheet

Fat stored in the hump

Double layer of long eyelashes

Sandy coloured hair

Large padded feet



Polar bear adaptations for the Arctic environment

Worksheet

White Fur*

Greasy fur

Thick fur coat

Large
padded feet



* Actually the fur is transparent (see-through). It has a hollow core that scatters light in a similar way to ice and snow.

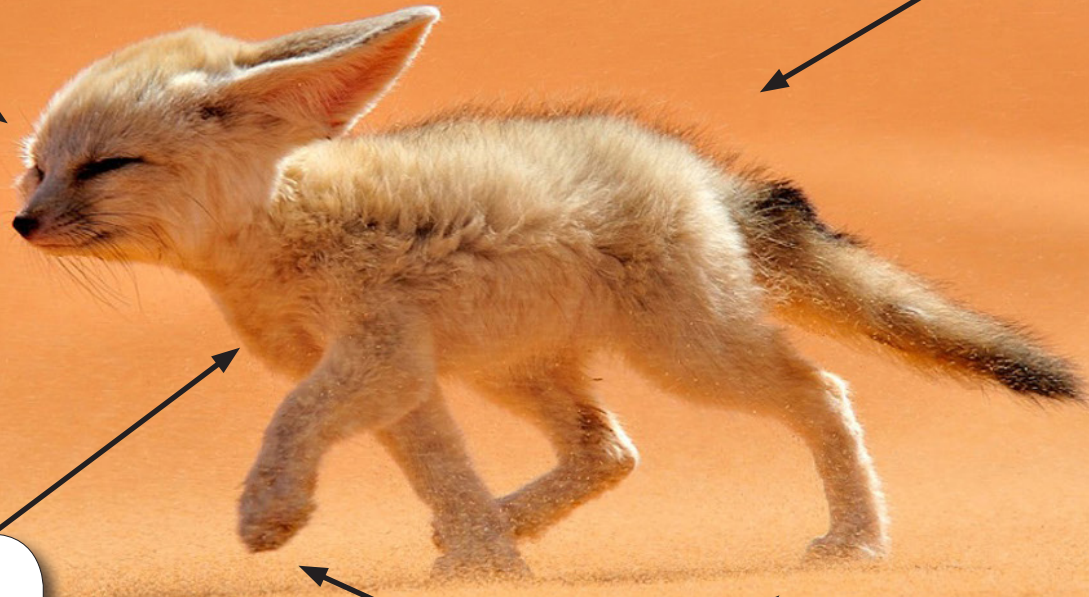
Large eyes

Large ears

Short fur

Sandy coloured fur

Fur on bottoms of feet



Arctic fox adaptations for the Arctic environment

Worksheet

Small ears,
eyes and
nose

Thick fur coat

Long bushy tail

White fur

Short legs



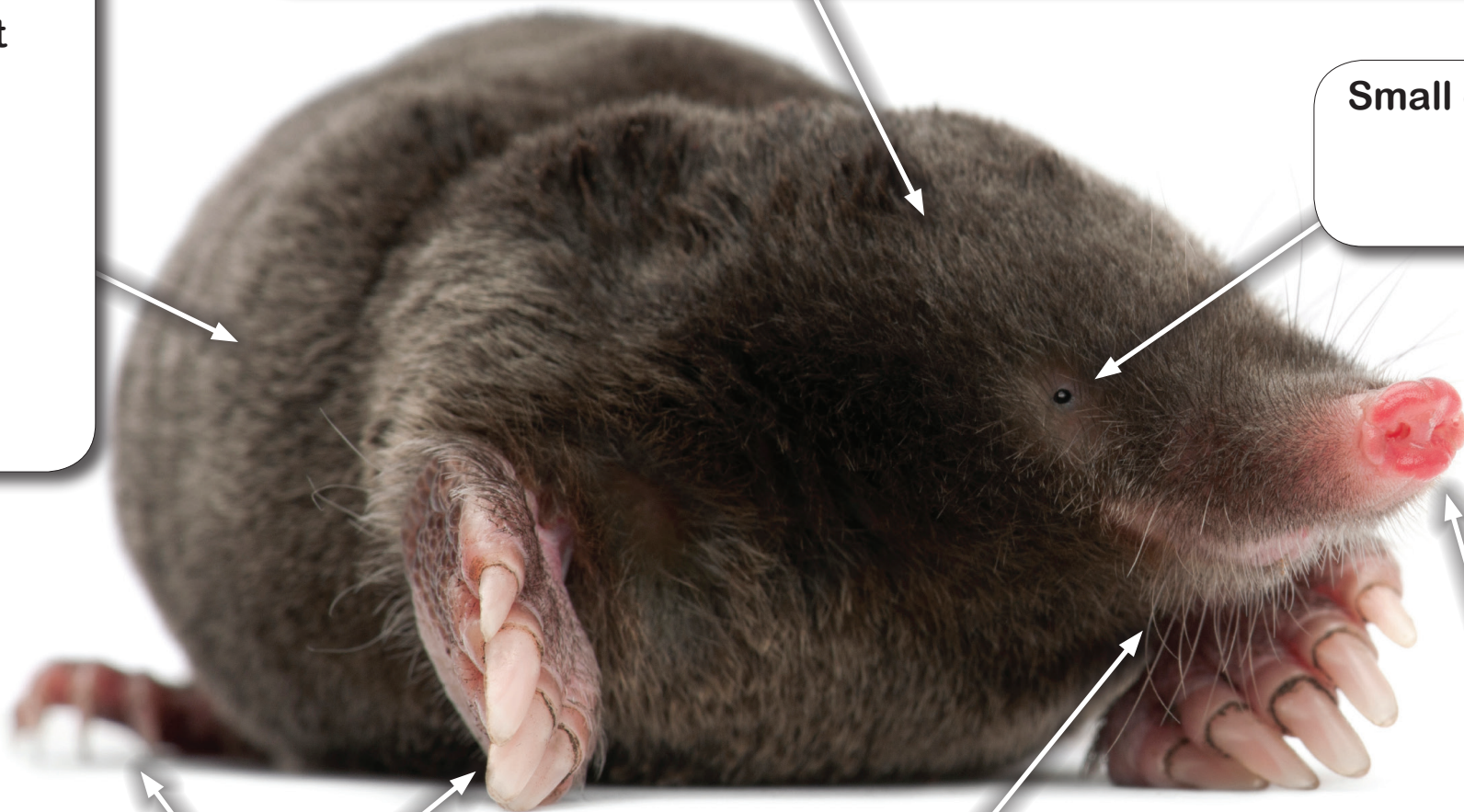
Mole adaptations for living underground

Worksheet

Very small ears

Smooth,
dense short
fur coat

Small eyes



Large spade-like paws

Sensitive whiskers

Small sensitive nose

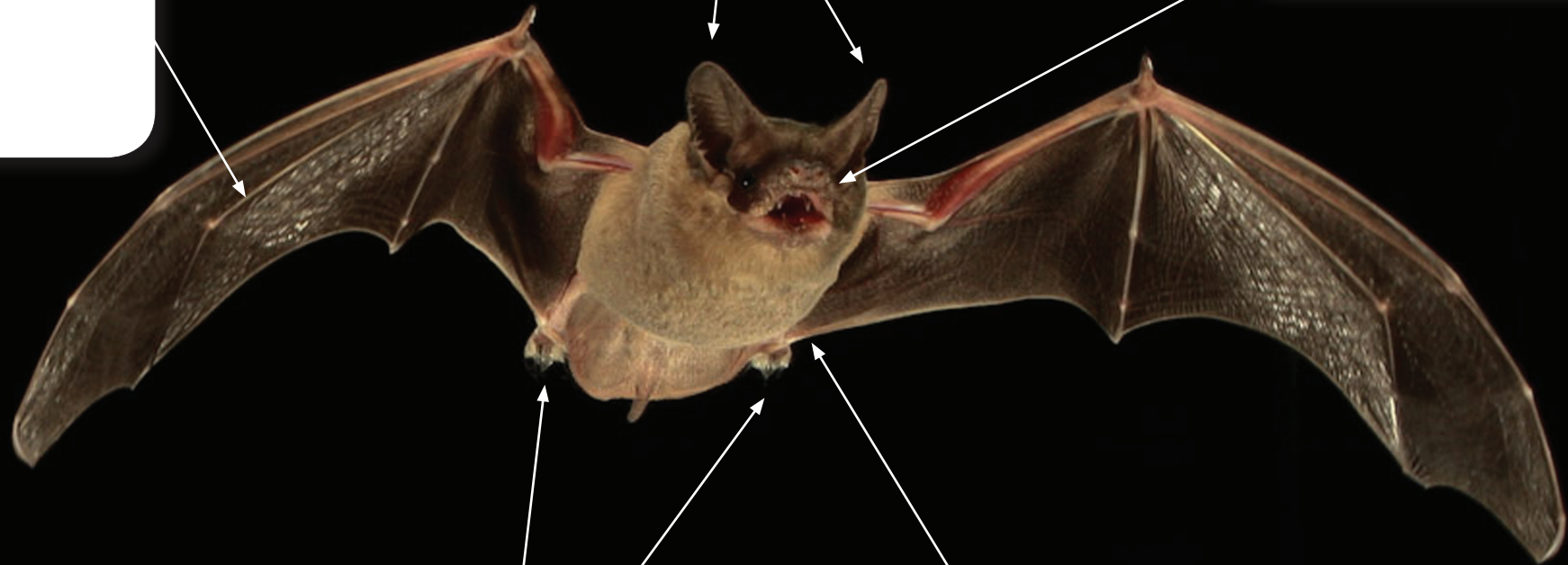
Bat adaptations for night flying

Worksheet

Thin leathery skin between 'fingers'

Large ears

Special mouthparts



Small feet with sharp claws

Dark coloured fur